

Speed vs. Velocity

Speed is how _____ or _____ an object is moving.

- Speed requires a _____ and a _____.
- To calculate speed

$$\text{Speed} = \underline{\hspace{2cm}}$$

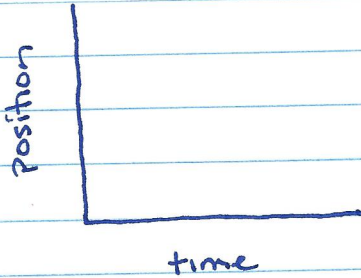
Velocity is how _____ or _____ an object is moving in a _____.

- If the _____ changes, the _____ changes even if the _____ stays the same.
- Velocity requires a _____, a _____, AND a _____.
- To calculate velocity

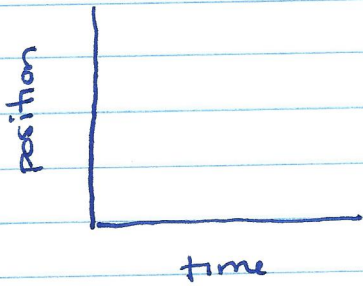
$$\text{Velocity} = \underline{\hspace{2cm}}, \boxed{\text{direction}}$$

Velocity can be graphed on a _____ vs _____ graph.

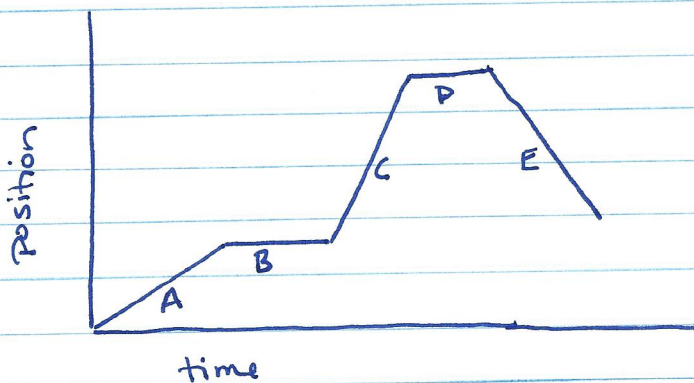
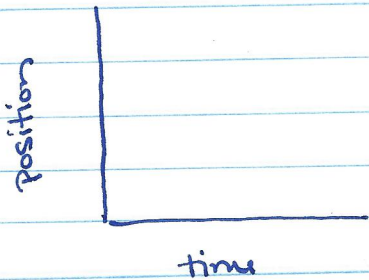
position vs time



position vs. time



position vs. time



A
B
C
D
E